

Highway 1416 Sanitary Sewer – Construction Update

12/18/2025

Project Summary: Upsize the sanitary sewer line from about Cottonwood Ave to West Gate Rd in the Highway 1416 median to support the growth of Box Elder

Contractor: H&W Contracting, LLC, Sioux Falls, SD
John Rennich, 605.339.8834

Engineer: KLJ Engineering, Rapid City, SD
Tim Hartmann, 605.872.5004

Important Note: Motorists are reminded to carefully monitor their speed through the construction zone and remain aware of construction activities and changing weather.

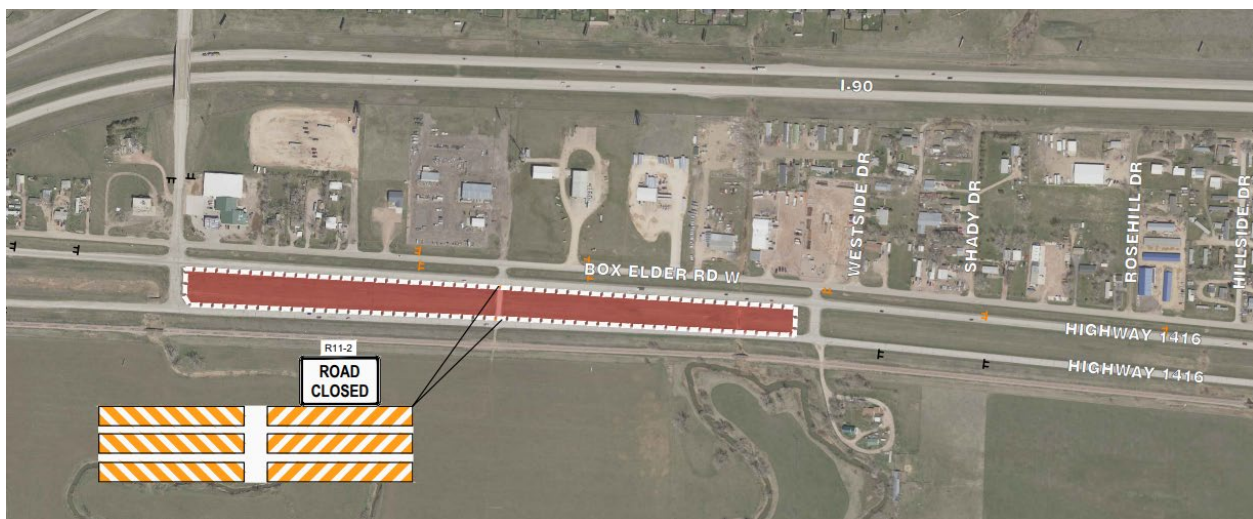
December 22nd to December 27th:

- **Important note:** The intermediate Box Elder Road Access Crossover as shown in the picture below will remain closed through **Tuesday, December 23rd**.
 - Any vehicles needing use of this detour should continue to proceed to the next available crossover.
 - This crossover closure will not affect passerby traffic on Highway 1416.
- Work also continues in the Highway 1416 median, east of West Gate Road.
- **Note** - Work will be minimal in the latter half of the week due to the Christmas holiday.

December 29th to January 3rd:

- Work continues west of the Box Elder Road Access Crossover, toward the West Gate Road crossing.
- Work will include activities next to Highway 1416, but all lanes will remain open.
- **Note** - Work will be minimal in the latter half of the week due to the New Year holiday.

Work Area - Continued to December 23rd:



Work Area – December 22nd to January 3rd:

